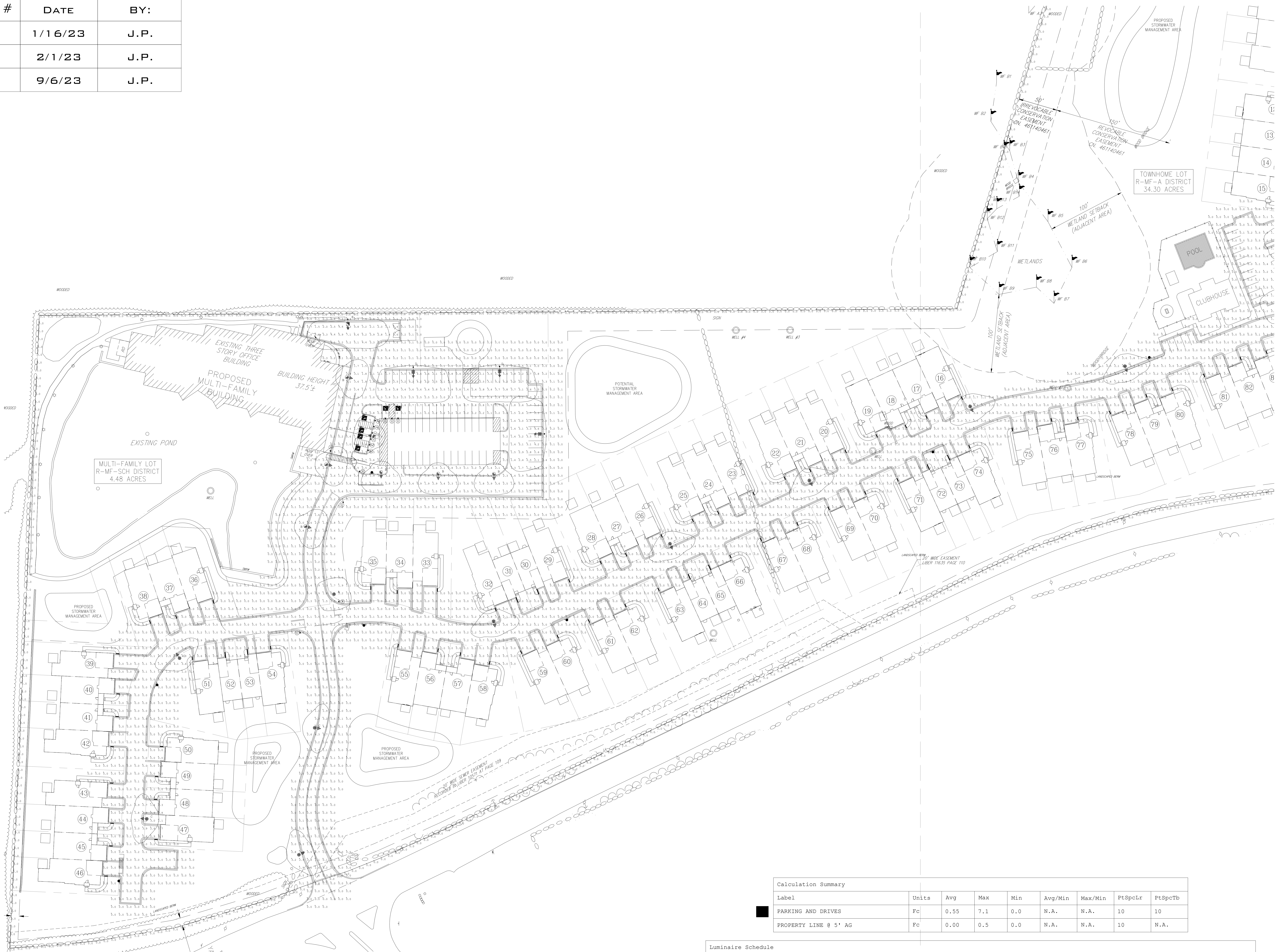


REVISIONS		
REV #	DATE	BY:
1	1/16/23	J.P.
2	2/1/23	J.P.
3	9/6/23	J.P.



Calculation Summary								
Label	Units	Avg	Max	Min	Avg/Min	Max/Min	PtSpcLr	PtSpcTb
PARKING AND DRIVES	Fc	0.55	7.1	0.0	N.A.	N.A.	10	10
PROPERTY LINE @ 5' AG	Fc	0.00	0.5	0.0	N.A.	N.A.	10	N.A.

Luminaire Schedule								
WLS17145	AIRPORT CAMPUS	NORTH CASTLE, NY	PM: HOLLY	PLEASE EMAIL US FOR PRICING AT HOLLY@WLSLIGHTING.COM				
Symbol	Qty	Label	Lum. Lumens	LLF	Description	Lum. Watts		
	6	A	5084	0.950	WLS-IXL-PT-SW-LED-05L-40-SLW 12' POLE	39.2		
	7	B	5054	0.950	WLS-IXL-PT-FT-LED-05L-40-SLW 12' POLE	39.2		
	14	C	5046	0.980	WLS-IXL-PT-2-LED-05L-40-SLW 12' POLE	39.2		
	3	D	12044	0.980	WLS-CLXM-LED-18L-SIL-FT-40-70CRI-IL-SLW 20' MOUNTING HEIGHT	148.5		
	1	E	13765	0.950	WLS-CLXM-LED-18L-SIL-3-40-70CRI-IL-SLW 20' MOUNTING HEIGHT	148.5		

BASED ON THE INFORMATION PROVIDED, ALL DIMENSIONS AND LUMINAIRE LOCATIONS SHOWN REPRESENT RECOMMENDED POSITIONS. THE ENGINEER AND/OR ARCHITECT MUST DETERMINE APPLICABILITY OF THE LAYOUT TO EXISTING OR FUTURE FIELD CONDITIONS.

THIS LIGHTING PATTERN REPRESENTS ILLUMINATION LEVELS CALCULATED FROM LABORATORY DATA TAKEN UNDER CONTROLLED CONDITIONS UTILIZING CURRENT INDUSTRY STANDARD LAMP RATINGS IN ACCORDANCE WITH ILLUMINATING ENGINEERING SOCIETY APPROVED METHODS. ACTUAL PERFORMANCE OF ANY MANUFACTURER'S LUMINAIRE MAY VARY DUE TO VARIATION IN ELECTRICAL VOLTAGE, TOLERANCE IN LAMPS AND OTHER VARIABLE FIELD CONDITIONS.

AIRPORT CAMPUS  
NORTH CASTLE, NY

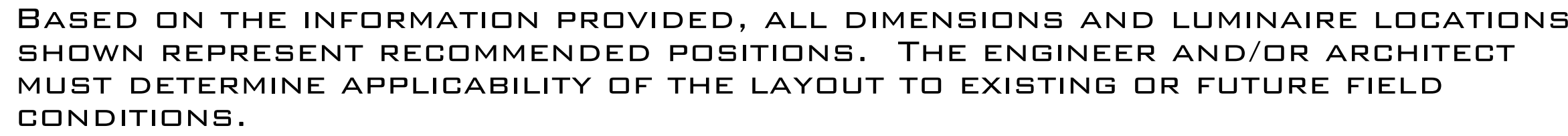
WLS LIGHTING  
a WLS company

6820 CORPORATION PKWY  
FORT WORTH, TX 76126  
WWW.WLSLIGHTING.COM



REVISIONS		
REV #	DATE	BY:
1	1/16/23	J.P.
2	2/1/23	J.P.
3	9/6/23	J.P.

REV #	DATE	BY:
1	1/16/23	J.P.
2	2/1/23	J.P.
3	9/6/23	J.P.



AIRPORT CAMPUS  
NORTH CASTLE, NY

6820 CORPORATION PKWY  
FORT WORTH, TX 76126  
WWW.WLSLIGHTING.COM

**WLS** LIGHTING — a WLS company

WLS-17145

DATE -9/1/22

800-633-8711

PM:HOLLY

BY: J.P.

SHEET 2 OF 2